



Understand your students' mental health, and help those who need it most



Many students struggle to manage feelings of stress, anxiety, depression, and grief. These facets of mental health affect students' behavior and academic outcomes. Without the proper support and interventions, they can even lead to violence, self-harm, or suicide.

Despite their best intentions, student services teams are stretched thin. Often supporting hundreds of students each, school counselors may lack the resources to know for sure which students are suffering and most in need of support.

That's where Securly Aware comes in. Securly Aware is a student safety and wellness solution that provides unprecedented visibility into your students' mental health and wellness. The data provided by Aware can help you understand and meaningfully impact your students' wellness. With Aware, you can:

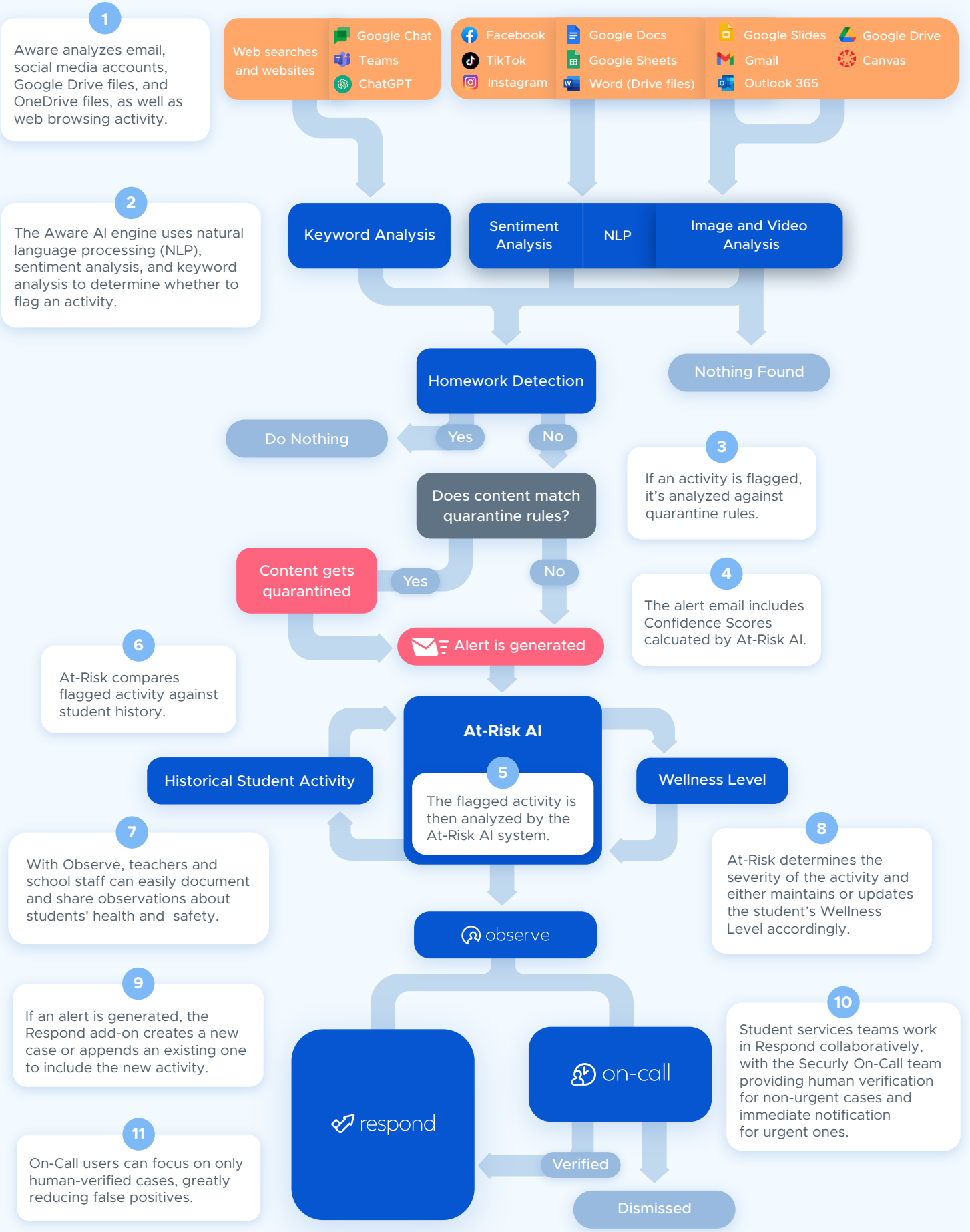
- Know who's at risk of self-harm, suicide, depression, violence, and bullying
- Proactively support students who demonstrate concerning behaviors
- Gain a clear picture of each student's current wellness level
- Intervene quickly when wellness levels drop
- Respond effectively to student safety concerns

"To be able to catch clues on social media that would enable administrators and teachers to work with parents is absolutely worth everything to us as a community."

Dr. Barbara Nesbitt,

Asst. Superintendent for Technology Services Pickens County School District

How Aware works



1

Aware analyzes email, social media accounts, Google Drive files, and OneDrive files, as well as web browsing activity.

Web searches and websites

Google Chat, Teams, ChatGPT

Facebook, TikTok, Instagram

Google Docs, Google Sheets, Word (Drive files)

Google Slides, Gmail, Outlook 365

Google Drive, Canvas

2

The Aware AI engine uses natural language processing (NLP), sentiment analysis, and keyword analysis to determine whether to flag an activity.

Keyword Analysis

Sentiment Analysis

NLP

Image and Video Analysis

Homework Detection

Nothing Found

Do Nothing

Yes

No

Does content match quarantine rules?

Content gets quarantined

Yes

No

Alert is generated

3

If an activity is flagged, it's analyzed against quarantine rules.

4

The alert email includes Confidence Scores calculated by At-Risk AI.

6

At-Risk compares flagged activity against student history.

Historical Student Activity

At-Risk AI

5
The flagged activity is then analyzed by the At-Risk AI system.

Wellness Level

7

With Observe, teachers and school staff can easily document and share observations about students' health and safety.

observe

8

At-Risk determines the severity of the activity and either maintains or updates the student's Wellness Level accordingly.

9

If an alert is generated, the Respond add-on creates a new case or appends an existing one to include the new activity.

respond

on-call

10

Student services teams work in Respond collaboratively, with the Secury On-Call team providing human verification for non-urgent cases and immediate notification for urgent ones.

11

On-Call users can focus on only human-verified cases, greatly reducing false positives.

Verified

Dismissed

Benefits

- Use the resources you're putting towards student wellness effectively
- Identify depression, grief, anxiety, and other mental health issues
- Proactively intervene with your most vulnerable students
- Curb cyberbullying and violence with proactive tools
- Virtually eliminate false positives with our advanced AI
- Centralize and streamline caseload management

Features

Preventative and automated interventions

Wellness Levels

- Know and easily visualize each student's emotional wellbeing—and respond proactively if levels begin to drop.

Wellness Pathways Widget Wellness Intervention

- Present students with mental health resources if their wellness levels decline with the Wellness Pathways Widget.

Think Twice Bullying Intervention

- Curb cyberbullying with Think Twice, which analyzes student posts and emails to detect hurtful content, and prompts them to reconsider before sending.

Email Recall & File Quarantine

- Automatically recall emails containing violence, bullying, and nudity.
- Automatically quarantine images containing nudity.
- Upgrade to also scan video files for pornography.

Comprehensive Scanning of Students' Online Activities

- Google Drive files, Docs, Sheets, Slides, OneDrive files, Canvas (messages, comments, and uploaded images), emails, social media, and web searches are scanned to identify indications of suicide, depression, violence, bullying, and nudity.

Flagged Activity Alerts

- Receive real-time alerts of concerning student activities via email, so designated staff can view all alert notifications and activity in their assigned OUs.

Sentiment Analysis

- Detects the actual sentiment behind posts, even when traditionally flagged keywords are not included.

At-Risk AI

- At-Risk AI conducts a nuanced analysis of flagged events, including a student's activity history, to determine a student's Wellness Level.
- Wellness Levels are continuously monitored and updated based on student activity.

Granular Contact Management (On-Call)

- Give admins visibility into the level of resource coverage and adjust according to the contacts' availability or school schedules.

In-depth Case Management (Respond)

- Efficiently Manage cases from creation to resolution, ensuring resources are focused on the most at-risk students.

Record Observed Student Wellness Data (Observe)

- Makes it easy for teachers and school staff to record observed student wellness data and share it with support teams, so that they can investigate and intervene when needed.

Centralize on a single platform to simplify management

Securly has a suite of other products that work with Aware to help you manage student safety and wellness. Integrations include:



Get additional context for Aware alerts—and visibility and control over all devices regardless of location—with our industry-leading CIPA-compliant cloud web filter



Enlist safety experts to analyze and validate alerts from Aware and escalate response—before things get worse



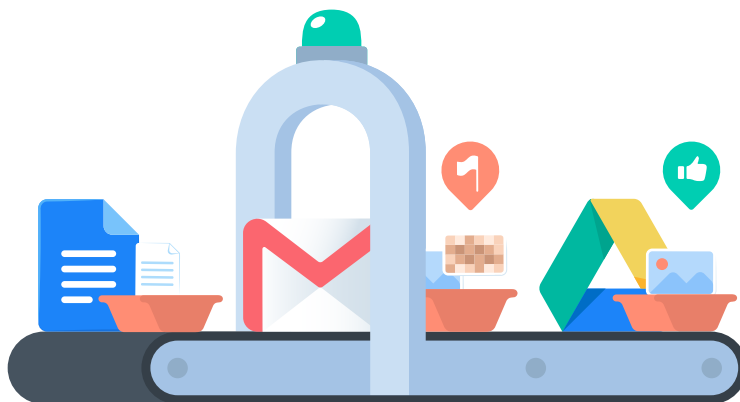
An equitable way to capture student voice, while helping your students develop self-regulation skills and get ready to learn.

Focus your student support services where they're needed most

With Securly Aware, you can identify the students who are most at-risk and intervene before the worst happens.

Don't worry about your students' wellness. Know for sure with Aware.

[Register for a demo now](#)



✉ sales@securly.com

☎ 1-855-SECURLY

🌐 www.securly.com

©2024. Logos and trademarks are the property of their respective companies. All rights reserved.